



Where to study

Teacher
qualifications –
from certificates
to masters

SHUTTERSTOCK

el.gazette

Find your ideal course

Wondering where to get your teaching certificate or master's degree? Read on for all you need to know

In recent years, the only teacher qualifications the *Gazette* has provided information on have been at master's level. In this issue we've decided to go right back to the beginning and start with cert courses.

In the midst of a pandemic, initial teacher training courses appear to be booming, as locked-down undergraduates and furloughed employees sign on for an ever-growing selection of online training courses. Even Cambridge Assessment has allowed online teaching practice at least for the duration.

As always in a recession, the *Gazette* has been receiving frantic emails from would-be trainees asking us whether the Bloggins certificate course is worth doing, not to mention the endless offers of articles from Bloggins Certificates Ltd, anxious to persuade our readership how wonderful they are.

So, on the pages overleaf, we've set out to explain the system of regulated qualifications, at least as it operates in Europe, while on page 50 our friends at Bridge in Denver explain the accreditation system for training courses as it operates in the USA.

If you're reading this in the Antipodes and feel we haven't explained how things work Down Under, feel free to let us know.

Though, in our defence, we have listed every training centre for the Cambridge CELTA and Trinity CertTESOL in the English-speaking world – and even managed to squeeze

in a mention of the certificates from TESOL International, TESOL Asia and the Scottish Qualification Authority on page 29.

Of course, we haven't forgotten the master's courses – after all, many teachers start with a master's, because that's the teaching qualification they need in their home country. Rather weirdly, however, in the UK, the British Council inspectors still won't accept a master's as a teaching qualification to work in an accredited language school, although they seem happy to wave through non-graduates with a certificate from our friends at Bloggins.

For our full listing of master's courses in the UK and Ireland – plus our handy guide to understanding what their names actually mean and why the Scots schools all offer MScs – turn to page 34. We're not promising our list is comprehensive, but we think it's the most comprehensive one available, though do let us know if you run a course that we left out.

Finally, for those teachers who already have a certificate but aren't yet ready for a master's, on page 32 Ben Beaumont of Trinity College London, introduces its new certificates for practising teachers. They look to us like the answer to our non-graduate Bloggins teachers' prayers: a degree-level qualification on the qualification register for England and open to experienced teachers. It's definitely worth more than the paper it's written on.

MELANIE BUTLER, EDITOR IN CHIEF

Contents

17 **CERTIFICATES MAKE SENSE**
Get a qualification that is legally recognised or accredited

18 **UNDERSTANDING THE CELTA**
The model most often followed by English language training centres

19-28 **CELTA LIST**
Centres in English-speaking countries

29 **WHAT TESOL IS ALL ABOUT**
The Trinity certificate and other courses

29-31 **TRINITY LIST**
Where you can take the Trinity course

34 **YOUR MASTER'S DEGREE**
How to choose the best institution to study for yours

36-41 **MASTER'S DEGREES**
Our list of degrees in the UK and Ireland

“We've set out to explain the system of regulated qualifications”



JONATHAN DANIELS ON UNSPLASH

Have **TEFL** certificate will travel?

What do you really need to know about training for TEFL?

Melanie Butler investigates

Training courses for Teaching English as a Foreign Language (TEFL) are booming as graduating students and furloughed workers sign up for online programmes which they hope will lead to jobs overseas after lockdown. But which of the many courses available is best?

It's not a question of quality, it's a question of portability, as different countries demand different things. So, which qualifications are accepted in the most countries?

If you're going to a country where you need a visa – which for Brits will now include the EU – the most essential qualification is a university degree.

With some exceptions for language assistants working in state schools, the only countries we know of which allow you to teach English legally without a degree are the UK and Malta. And, outside of Europe, where preference is given to EU citizens, a depressing number of countries also require you to have a passport from an English-speaking country

With a university degree and the right passport there are a small number of countries where you don't need a training course. Traditionally it has been possible to work legally in private language schools in Japan, Korea and Taiwan without a certificate, while in France and Germany ability to speak the national language has been seen as more important. A small number of countries, including China, allow graduates with a degree in English to work without TEFL training.

The number of countries requiring certificates for work visas is, however, increasing plus, in a recession, the supply of graduates from English-speaking countries looking to go abroad rockets, so having the right certificate will give you an advantage.

Which certificate should you have? As already stated, the requirements vary from country to country, but a 120-hour course including 20 hours of teaching practice with English language learners, from a reputable provider, is acceptable almost everywhere. Online courses are now also commonly accepted, though less so in the Middle East. However, employers prefer online courses which include tutor support and teaching practice on real students.

Which certificate provider is acceptable for a visa again depends on the country.

The toughest restrictions are in the European Union member states, where the only certificates which are widely accepted are the Cambridge University CELTA, the Trinity College London CertTESOL and their Irish equivalent, the CELT. As these appear to be accepted everywhere else too, we have listed every provider of both the CELTA and the CertTESOL in the English-speaking world, starting on page 19. As CELT courses are only available in Ireland, they are not included.

Outside of Europe, the situation is far less UK-centric. In East Asia, for example, where American English is standard, certificates awarded by accredited US universities and specialist institutes, such as the School of International Training in Vermont, are accepted, as are courses inspected by the two main accrediting bodies for language centres: CEA and ACCET, which accredits the training courses from Bridge in Denver, see page 50.

The US system's use of accreditation is reflected in the requirement in many countries for teachers to have certificates which are, as the Chinese authorities put it, 'recognised and accredited'.

Unfortunately, however, outside the US no national system for accrediting TEFL certificates exists. Instead, a host of 'accrediting bodies' have sprung up on the internet, some owned by the very company whose certificates it accredits.

Countries don't print lists of certificates they accept. Even the Korean government EPIK programme, whose list of certificates was traditionally followed in many Asian countries, now simply asks for a 'TEFL/TESOL/CELTA/etc certificate of at least 100 hours or more from an accredited programme'. Apart from CELTA, a certificate which can only be issued by the University of Cambridge, this could cover any number of certificates accredited by almost anyone.

We recommend only considering either the US accredited courses described above or certificates issued by a national assessment body and accepted on the national qualification framework of the relevant English-speaking country. These include AQF in Australia, the QQI in Ireland or the UK's Ofqual, which lists not only CELTA and Trinity, but at least five other course providers.

At least then if the country you are applying for a job in hasn't heard of your course, you can prove that it's an officially recognised qualification back home.

Be careful though. We have come across a few UK courses claiming to be accredited by Ofqual which we couldn't find on the register. If you take away one thing from this article, it's that, when it comes to teacher training certificates, always check everything you read on the web.



Ofqual regulated certificates

Both Cambridge Assessment CELTA and Trinity College London CertTESOL are regulated qualifications listed at Level 5 on the Ofqual registers. The following TEFL qualifications at the same level are listed by the Office of Qualifications and Examinations Regulation (Ofqual) in England:

Course provider:	The TEFL Academy
Courses:	Level 5 certificates in Teaching English as a Foreign Language
Assessment body:	Qualifi
Course provider:	i-to-i
Courses:	Level 5 certificates in Teaching English as a Foreign Language
Assessment body:	GA

Three more assessment bodies – Pearson, TQDQ and Focus – have Ofqual regulated Level 5 certificates in this field.

Just what is CELTA?

The University of Cambridge Certificate in English Language Teaching to Adults (CELTA) is the oldest established ELT training certificate and was developed from a certificate launched by International House over 50 years ago. Most training courses now follow the CELTA model (see box, right).

It is also the most well-known. Cambridge Assessment research by the university department which owns CELTA suggests it is the required qualification for one-third of TEFL jobs and it is certainly the most frequently named in the job ads we see.

The main advantages, apart from its reputation and the fact that it's owned by a world-famous university, is that it has a clear syllabus followed by every centre and that Cambridge Assessment specifies the process of training teacher trainers, visits every course provider, most courses and assesses some of the work of every candidate.

The main disadvantage is that it's focused on teaching adults – assessed teaching practice, for example, must be with over 16s – yet most of the students in the world's language schools are now aged six to 16 and, increasingly, even younger.

Although there has been an online option for several years, until the pandemic all teaching practice had to be face to face, which is clearly optimum. Cambridge is allowing online teaching practice for the duration of Covid-19, but it is unclear if this will continue post-pandemic. We'll try to keep you posted.

The CELTA model

Most widely accepted certificates follow the CELTA model:

- 120 course hours, including 20 hours of teaching practice with adult language learners, normally face to face.
- A solid grounding in communicative language teaching methodology.
- Assessed written work.
- Assessed teaching practice.
- No final exam.
- Designed as an initial pre-service qualification and does not confer state-qualified teacher status.
- Available to non-graduates and non-native speakers (no precise language level specified).
- On the national register of recognised qualifications for England at level 5 of the English qualification framework run by OFQUAL, and on the European Qualification Framework at Level 5 with certificate issued by an accredited assessment body.

NB: A similar qualification framework exists across Europe. In Ireland, for example, it's run by QQI, and it also exists in Australia and New Zealand. However, the system for certificate validation in the USA is quite different, as trainers Bridge in Denver explain on page 50.



Make 2021 your year!

We offer a range of Face to Face & Online learning environments to suit your needs.

Learn from our expert educator & discover how to teach online, at home & abroad.



Take your career to the next level with our DELTA program!

"I'd been nervous to take the next step in my career but the Teaching House team made me feel confident I could do it. The DELTA was definitely a challenge but I now feel equipped with the knowledge to lead a school & step up my career"

- Nicholas, 2020 Graduate -

Looking to teach? The CELTA is the qualification that counts!

"I completed my CELTA course through Teaching House & it was fantastic. A small class (only 6 of us & we have all become good friends), great students to teach, awesome instructors, excellent facilities & a fantastic spot in the city"

- Andrew, 2020 Graduate -

www.teachinghouse.com | info@teachinghouse.group

Institutions offering CELTA	Town	Online	How often	Full time	Part-time	Cost
Australia						
Holmesglen English Language Centre Contact: Daniel Schulstad, dan.schulstad@holmesglen.edu.au	Victoria	✓	2 x year *	✓ ✓	✓ ✓	A\$3,382.50 *
International House Sydney Contact: Nina Leigh, yleigh@ih Sydney.com.au	Sydney	✓	10 x year 2 x year	✓ ✓	✓ ✓	\$3,545 *
LTTC Australia Contact: David Fox, dfox@lexisenglish.com; lttc@lexisenglish.com	Queensland	✓	* *	✓ ✓	✓ ✓	A\$3,200 A\$3,200
Melbourne Training Associates Contact: Barbara Munro, celta@melbtraining.com.au	Victoria	✓	* *	✓ ✓	✓ ✓	A\$3,100 A\$3,100
Milner International College Of English Contact: Amanda Hearn, celta@milner.wa.edu.au	Perth		5 x year	✓	✓	A\$3.250
Monash University English Language Centre Contact: Duncan Perrin, duncan.perrin@monashcollege.edu.au	Victoria		*	✓	✓	*
Phoenix Academy Contact: Sandra Houghton, sandra.houghton@phoenix.wa.edu.au	Perth	✓	*	✓ *	✓ *	* *
RMIT – English Worldwide Contact: David Threadgold/Scott Claire, CELTA@rmit.edu.au	Victoria	✓	* *	✓ ✓	✓ ✓	A\$3,100 *
Shafston Cambridge Exam Centre Contact: Karl Biggs, karl.biggs@cambridgeexam.com.au	Queensland	*	*	*	*	*
South Australian College of English Contact: Niki Walker, dos@sacecoll.sa.edu.au	Adelaide	✓	2 x year	✓	✓	* *
Teaching House Melbourne at Holmes Institute Contact: Enrollment Team, melbourne@teachinghouse.com	Victoria	✓	* *	✓ ✓	✓ ✓	A\$2,900 A\$2,900
University of Adelaide’s English Language Centre Contact: Amy Brown, elc@adelaide.edu.au	Adelaide	✓	*	✓ ✓	✓ ✓	* *
UTS:INSEARCH (University of Technology Sydney) Contact: David Noble, David.Noble@insearch.edu.au	Sydney		7 A YEAR	✓	✓	A\$3,500
Canada						
Greystone College (ILSC Education Group) Contact: Christopher Cooke, christopher.cooke@ilsc.com	Toronto		*	✓	✓	*
Greystone College (ILSC Education Group) Contact: John Ballam, john.ballam@greystonecollege.com	Vancouver		*	✓	✓	*
ILSC Montreal Contact: CELTA Admin Team, celta.montreal@ilsc.com	Montreal	✓	every 6 weeks *	✓ ✓	✓ ✓	C\$2,550 C\$2,550
*Contact institution for details						

Institutions offering CELTA	Town	Online	How often	Full time	Part-time	Cost
Canada continued						
International House Career College Vancouver Contact: Jeff Romonko, info@ihvancouver.com	Vancouver	✓	* *	✓ ✓	✓ ✓	* *
St Mary's University ELC Contact: Julian L'Enfant, CELTA@smu.ca	Nova Scotia	✓	2 x year 2 x year	✓ ✓	✓ ✓	\$2,500 *
Sheridan College Contact: Tania Iveson, tania.iveson@sheridancollege.ca	Ontario		*	✓	✓	*
Teaching House Toronto Contact: Enrollment Team, info@teachinghouse.com	Toronto	✓	* *	✓ ✓	✓ ✓	\$2,795
Ireland						
ACET (Active Centre of English Training) Contact: Laura Dwyer-Canton, academic@acetireland.ie	Cork		*	✓	✓	€1,300
Centre of English Studies Contact: Niamh O'Byrne, teachertraining@ces-schools.com	Dublin	✓	8 x year 4 x year	✓ ✓	✓ ✓	€1,850 €1,430
Cork English College Contact: Fiona Gomez, fiona@corkenglishcollege.ie	Cork		8 x year	✓	✓	€1,500
Exam Centre of Ireland Contact: Paul Seaver/Deirdre Byrne, celta@theenglishacademy.ie	Dublin	✓	*	✓ ✓	✓ ✓	€1,425 *
International House Dublin Contact: Carmel Hickey, carmel.hickey@ihdublin.com	Dublin	✓	11 x year	✓ ✓	✓ ✓	€1,825 €1,825
International House Dublin in Waterford Contact: Carmel Hickey, carmel.hickey@ihdublin.com	Waterford	✓	11 x year *	✓ ✓	✓ ✓	€1,825 €1,825
International House Galway Contact: Mary Grennan, info@ihgalway.ie	Galway		7 a year	✓	✓	€1,480
Kaplan International College Dublin Contact: Michelle Dawson, michelle.dawson@kaplan.com	Dublin		*	✓	✓	*
University College Cork Contact: Brendan Ó Sé, b.ose@ucc.ie	Cork	✓	3 x year *	✓ ✓	✓ ✓	€1,795 *
University of Limerick Language Centre Contact: Sónia Pereira, sonia.pereira@ul.ie	Limerick		*	✓	✓	*
Malta						
NSTS English Language Institute Contact: Jean Sciberras, jscib@nsts.org	Valletta	✓	* *	✓ ✓	✓ ✓	€1,500 *
New Zealand						
Ara Institute of Canterbury Contact: Julie van Dyk, julie.vandyk@ara.ac.nz	Canterbury		1 x year	✓		*
Christchurch College of English Contact: Gabriela Lopez, gabriela.lopez@ccel.co.nz	Canterbury		4 x year	✓	✓	NZ\$3,050
*Contact institution for details						

Institutions offering CELTA	Town	Online	How often	Full time	Part-time	Cost
<u>New Zealand Language Centres (NZLC)</u> Contact: Rhian Owen, rhiano@nzlc.ac.nz	Auckland		3 x year	✓	✓	NZ\$3,400
<u>New Zealand Teacher Training and Exam Centre</u> Contact: Peter Nicoll, petern@languages.ac.nz	Auckland		6 x year	✓	✓	NZ\$3,300
<u>Southern Lakes English College</u> Contact: Kathy Gaze, celta@slec.ac.nz	Otago		*	✓		NZ\$3,375
<u>UNITEC School of Languages and Applied Linguistics</u> Contact: Sarah Bampton, sbampton@unitec.ac.nz	Auckland		*	✓	✓	*
<u>University of Auckland</u> Contact: James Prosee, j.prosee@auckland.ac.nz	Auckland		4 x year	✓	✓	NZ\$3,400
<u>Waikato Pathways College - The University of Waikato</u> Contact: Charlie Hadfield, chadfiel@waikato.ac.nz	Waikato		*	✓	✓	*
United Kingdom						
<u>Adult Education Wolverhampton</u> Contact: Alison Wallace, alison.wallace@aes.wolverhampton.gov.uk	Wolverhampton		*	✓	✓	*
<u>Alpha Business School</u> Contact: Joe Fisher, celta@alphabusinessschool.co.uk	London		*	✓	✓	*
<u>Anglia Ruskin University</u> Contact: Stephanie Dimond-Bayir/Ann Schofield, isu_shortcourses@anglia.ac.uk	Cambridge		7 x year	✓	✓	£1,675
<u>Anglo-Continental School of English</u> Contact: Tim Lewis, tlewis@anglo-continental.com	Bournemouth		7 x year	✓	✓	£1,485
<u>Barnet and Southgate College</u> Contact: Nefi Dizdarevic, nefi.dizdarevic@barnetsouthgate.ac.uk	Southgate	✓	*	✓ ✓	✓ ✓	
<u>Basil Paterson College</u> Contact: Sophie Revesz, sophie.revesz@basilpaterson.co.uk	Edinburgh		8 x year	✓	✓	£1,275
<u>Bath College</u> Contact: Christina Appleton, christina.appleton@bathcollege.ac.uk	Bath		1 x year		✓	£1,417
<u>Belfast Metropolitan College</u> Contact: Andrea da Silva, adasilva@belfastmet.ac.uk	Belfast	✓	1 x year 1 x year		✓ ✓	£1,075 £1,325
<u>Bell International College Cambridge</u> Contact: Ana Ceccolini, celta@bellenglish.com	Cambridge		5 x year	✓	✓	£1,500
<u>Bell International Institute, London</u> Contact: Enquiries Team, enquiries@bellenglish.com	London		5 x year	✓	✓	£1,500
*Contact institution for details						

Institutions offering CELTA	Town	Online	How often	Full time	Part-time	Cost
United Kingdom continued						
Blackburn College Contact: Maria Melia, maria.Melia@blackburn.ac.uk	Blackburn	✓	2 x year	✓	✓	£1,200 £1,000
British Study Centres Manchester Contact: Kim Tan, teacher.training@british-study.com	Manchester	✓	2 x year 9 x year	*	✓ *	£1,395 £1,395
Brooklands College Contact: Susan Pattison, susan.pattison@brooklands.ac.uk	Weybridge		*	✓	✓	*
Cambridge Regional College Contact: The CELTA Administrator, celta@camre.ac.uk	Cambridge	✓	*		✓ ✓	£1,505 £1,588
Canterbury Christ Church University Contact: Mark Almond, mark.almond@canterbury.ac.uk	Canterbury		2 x year	✓	✓	£1,440
Cardiff and Vale College Contact: Lisa Manogg, lmanogg@cavc.ac.uk	Cardiff	✓	1 x year 1 x year		✓ ✓	£1,640 £1,640
Cardiff Metropolitan University Contact: Gabriel Roberts, gjroberts@cardiffmet.ac.uk	Cardiff		*	✓	✓	*
Centre for English & World Languages Contact: Rebecca Coleman, cewlcelta@kent.ac.uk	Canterbury		*	✓	✓	*
CES Leeds Contact: Aidan Curley, leedsDos@ces-schools.com	Leeds	✓	5 x year 4 x year	✓ ✓	✓ ✓	£1,395 £1,395
CES – Edinburgh Contact: Valerie Reynolds, edinburghteachertraining@ces-schools.com	Edinburgh	✓	6 x year 2 x year	✓ *	✓ *	£1,300 £1,300
City & Islington College Contact: Kate Fuscoe, kate.fuscoe@candi.ac.uk	London		5 x year		✓	£1,417
City of Bristol College Contact: Donna Sellick, celta@cityofbristol.ac.uk	Bristol	✓	1 x year		✓ ✓	£1,417 *
Concorde International Study Centre Contact: Sandie Warren, info@concorde-int.com	Canterbury		*	✓	✓	*
Coventry University Contact: David Walters, ab9329@coventry.ac.uk	Coventry	✓	1 x year	✓ ✓	✓ ✓	£1,550 *
Dundee & Angus College Contact: Nicola Weston Gokalp, n.westongokalp@dundeeandangus.ac.uk	Dundee	✓	1 x year *		✓ ✓	£1,200 *
EC London Contact: Madeleine du Vivier, eclondodelta@ecenglish.com	London	✓	3 x year	✓	✓ ✓	* £1,200
Edinburgh College Contact: Sarah Donno, sarah.donno@edinburghcollege.ac.uk	Edinburgh		2 x year	✓	✓	£1,000
*Contact institution for details						

Institutions offering CELTA	Town	Online	How often	Full time	Part-time	Cost
<u>EHWLC – Hammersmith Campus</u> Contact: Sarah Hall, celta@gspace.wlc.ac.uk	London		*	✓	✓	*
<u>ELC Eastbourne</u> Contact: Chris Robinson, chris.robinson@elc-eastbourne.co.uk	Eastbourne		*	✓	✓	*
<u>Exeter College</u> Contact: Clare Suss, esoladmin@exe-coll.ac.uk, claresuss@exe-coll.ac.uk	Exeter	✓	*	✓	✓	*
<u>Foyle International</u> Contact: Kelley Proctor, info@foyle.eu	Derry City		1 x year	✓	✓	£1,250
<u>Glasgow Clyde College</u> Contact: Brian Doonan, Brian.Doonan@glasgow.ac.uk	Glasgow	✓	1 x year *	✓ ✓	✓ ✓	* *
<u>Highbury College, Portsmouth</u> Contact: Ia Matthews, ia.matthews@highbury.ac.uk	Portsmouth		3 x year	✓	✓	£1,350
<u>International House Bristol</u> Contact: Liz Bowden, liz@ihbristol.com	Bristol	✓	8 x year 1 x year	✓ *	✓ *	£1,545 £1,545
<u>International House London</u> Contact: Yulia Apalkova, infott@ihlondon.com	London	✓	5 x year 5 x year	✓	✓	£1,651 £1,651
<u>International House, Newcastle Upon Tyne</u> Contact: Caroline Preston, tt@ihnewcastle.com	Newcastle Upon Tyne		5 x year	✓	✓	£1,500
<u>ISE Hove English School</u> Contact: Christine-Reba Edge, teachertraining@ise.uk.com	Hove	✓	6 x year *	✓ ✓	✓ ✓	£1,250 *
<u>ITTC at BEET</u> Contact: Lucy Cochrane, tefl@itc.co.uk	Bournemouth		5 x year	✓	✓	£1,575
<u>Kaplan International English London</u> Contact: David Juhasz, kielondon@kaplan.com	London		*		✓	*
<u>Kensington & Chelsea College</u> Contact: Allan Jarrett, a.jarrett@kcc.ac.uk	London		*	✓	✓	*
<u>Kirklees College</u> Contact: Cathy Clarkson, cclarkson@kirkleescollege.ac.uk	Huddersfield		1 x year	✓	✓	£1,260
<u>LAL Torbay</u> Contact: Lucy Gubbin, lucy.gubbin@lalschools.com	Torbay		*	✓	✓	*
<u>Lambeth College</u> Contact: Asma Ahmad, aahmad@lambethcollege.ac.uk	London		1 x year	✓	✓	£1,450
<u>Language Link</u> Contact: David King, celta@languagelink.co.uk	London	✓	11 x year *	✓ ✓	✓ ✓	£1,240 £990
*Contact institution for details						

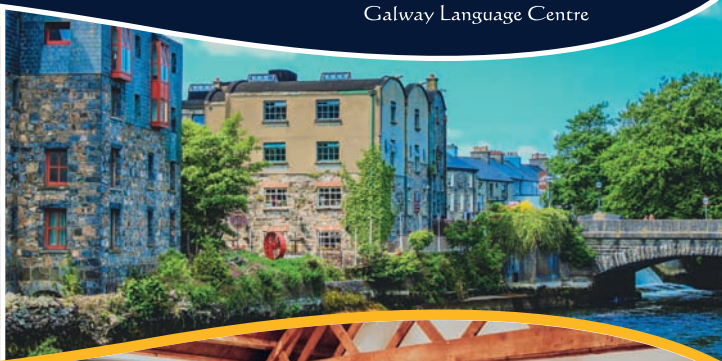
Institutions offering CELTA	Town	Online	How often	Full time	Part-time	Cost
United Kingdom continued						
Language Studies International Brighton Contact: Elaine Langstaff, celta-brighton@lsi.edu	Brighton		5 x year	✓	✓	£1,375
Lewisham Southwark College Contact: Janet Lunam, janet.lunam@lscollge.ac.uk	London		2 x year	✓	✓	£1,450
LILA Liverpool Contact: Jim Pearson, info@lilalovetolearn.com	Merseyside	✓	4 x year 1 x year	✓ ✓	✓ ✓	£1,350 £1,350
Live Language Contact: Sharon Chalmers, sharon.chalmers@live-language.com	Glasgow	✓	6 x year 1 x year	✓ ✓	✓ ✓	£1,300 *
London South East Colleges Greenwich Contact: Tamas Laczko, tamas.laczko@lsec.ac.uk	London		2 x year		✓	£811
LSI Portsmouth Contact: Joanna Glos, joanna.glos@lsi-portsmouth.co.uk	Portsmouth		6 x year	✓	✓	£1,500
MC Academy Contact: Nick Kiley, info@manchestercse.co.uk	Manchester	✓	2 x year *	✓	✓ ✓	£1,375 £1,375
*Contact institution for details						

Bridge Mills Galway Language Centre

www.galwaylanguage.com



Galway Language Centre



Ireland's first provider to offer QQI (Irish Department of Education) level 7 Teacher training TESOL Certificate – internationally recognised state qualification, to Teach English as a second or other language.

Cost : €1195

2021- Full time courses: 4 weeks - daytimes
starting 01 March , 06 April, 04 May, 06 September, 04 October,
01 November

Part – time course (evenings):
13 September – 25 November

The Bridge Mills, Bridge Street, Galway H91R1WF Ireland



Contact us: info@galwaylanguage.com

Tel: +353 91 566468

Institutions offering CELTA	Town	Online	How often	Full time	Part-time	Cost
<u>Newcastle College</u> Contact: Mike Abraham, mike.abraham@ncl-coll.ac.uk	Newcastle Upon Tyne		4 x year	✓	✓	*
<u>Newham College of Further Education</u> Contact: Clare Tyrer, clare.tyrer@newham.ac.uk	London		*	✓	✓	*
<u>Norwich Institute for Language Education</u> Contact: Maria Heron, maria@nile-elt.com	Norwich		3 x year	✓	✓	£1,456
<u>Nottingham Language Academy</u> Contact: Zita Reszler, zita.reszler@nottinghamlanguageacademy.co.uk; zita.c.reszler@gmail.com	Nottingham	✓	* *	✓ ✓	✓ ✓	£1,200 *
<u>Nottingham Trent University</u> Contact: Robert Hancock, nlc@ntu.ac.uk	Nottingham		*	✓	✓	*
<u>Reading Examination Centre</u> Contact: Kate Pepper, info@efl-reading.co.uk	Reading		3 x year	✓	✓	£1,350
<u>Richmond & Hillcroft Adult & Community College</u> Contact: Hilary Walsh, hilary.walsh@racc.ac.uk	Richmond and Surbiton		1 x year	✓	✓	£1,400
<u>St Giles College</u> Contact: Mike Williams (CELTA ICALT), mwilliams@stgiles.co.uk	Brighton		4 x year	✓	✓	£1,401
<u>St Giles College</u> Contact: Teacher Training Administrator, ttraining.london@stgiles.co.uk	London	✓	4 x year 3 x year	✓ ✓	✓ ✓	£1,401 £1,351
<u>South & City College</u> Contact: Christine Tudor-Jones, e104302@sccb.ac.uk	Birmingham		1 x year		✓	*
<u>South Thames College</u> Contact: David McClymont, david.mcclymont@stcg.ac.uk	London		5 x year		✓	£1,400
<u>Stafford House London</u> Contact: Connor O'Donoghue, teachertraining@staffordhouse.com	London	✓	7 x year 6 x year	✓ ✓	✓ ✓	£1,295 £1,295
<u>Studio Cambridge</u> Contact: Melissa Barrett, melissa.barrett@studiocambridge.co.uk	Cambridge		7 x year	✓	✓	£1,475
<u>Suzanne Sparrow Plymouth Language School</u> Contact: Philip Parker, Philip@sparrow.co.uk	Plymouth		*	✓	✓	£1,250
<u>Swansea University, English Language Training Services</u> Contact: Peter Neville, elts@swansea.ac.uk	Swansea	✓	3 x year 2 x year	✓ ✓	✓ ✓	* *
<u>Teaching House London at OHC</u> Contact: Graham Spencer, ttlondon@ohcEnglish.com	London	✓	15 x year	✓ ✓	✓ ✓	* £1,405

*Contact institution for details

Institutions offering CELTA	Town	Online	How often	Full time	Part-time	Cost
United Kingdom continued						
<u>Teaching House Oxford</u> Contact: Enrolment Team, info@teachinghouse.com	Oxford	✓	* *	✓ ✓	✓ ✓	* *
<u>Teaching House Stratford-upon-Avon</u> Contact: Enrolment Office, info@teachinghouse.com	Stratford-upon-Avon	✓	16 x year	✓ *	✓ *	* *
<u>Teesside University</u> Contact: Amy Blanchard, a.blanchard@tees.ac.uk	Middlesbrough		1 x year		✓	£1,300
<u>The College of Haringey, Enfield & NE London</u> Contact: Maralba Jani, mjani@staff.conel.ac.uk	London		2 x year		✓	£1,417
<u>The College of North West London</u> Contact: Tom Chan, thomas.chan@cnwl.ac.uk	London		*	✓	✓	*
<u>The University of Sheffield – English Language Teaching Centre (ELTC)</u> Contact: TEFL Admin, tefl@sheffield.ac.uk	Sheffield	✓	4 x year 1 x year	✓ ✓	✓ ✓	£1,500 £1,500
<u>University of East London</u> Contact: Shajeda Khanum, s.khanum@uel.ac.uk	London	✓	1 x year	✓	✓	£1,400 *
<u>University of Leicester Cambridge Exam Centre</u> Contact: Virginia Garcia Aragones, celta@le.ac.uk	Leicester		1 x year	✓	✓	*
<u>University of Northampton</u> Contact: Qian Zhang, qian.zhang@northampton.ac.uk	Northampton		*	✓	✓	*
<u>University of Warwick - Applied Linguistics</u> Contact: Jo Gakonga, j.gakonga@warwick.ac.uk	Warwick		12 x year	✓	✓	*
<u>University of Worcester Language Centre</u> Contact: Heather Brinkworth, h.brinkworth@worc.ac.uk	Worcester		2 x year	✓	✓	£1,300
<u>West Thames College</u> Contact: Patrick McCann, patrick.mccann@west-thames.ac.uk	London	✓	4 x year	✓	✓	£1,360 *
<u>Westminster Kingsway College</u> Contact: Simon Goodier, courseinfo@westking.ac.uk	London		1 x year		✓	£1,417
<u>Wirral Metropolitan College</u> Contact: Denia Kincade, denia.kincade@wmc.ac.uk	Merseyside		3 x year	✓	✓	£1,250
<u>York St John University</u> Contact: Admissions Department, efl@yorks.j.ac.uk	York	✓	1 x year 4 x year	✓ ✓	✓ ✓	£1,300 £1,300
United States						
	State					
<u>Intercultural Communications College</u> Contact: Betty Compton, bettycompton@icchawaii.edu	Hawaii		*	✓	✓	*
<u>International House San Diego</u> Contact: Emily Conner, emily@ihsandiego.com	California		*	✓	✓	*
*Contact institution for details						

Institutions offering CELTA	Town	Online	How often	Full time	Part-time	Cost
<u>Missouri State University CELTA Center</u> Contact: Jennifer Johnston, jenniferjohnston@missouristate.edu	Missouri	✓	*	✓ ✓	✓ ✓	* *
<u>Teaching House @ OHC English</u> Contact: Enrollment Department, info@teachinghouse.com	Massachusetts	✓	* *	✓ ✓	✓ ✓	* *
<u>Teaching House Atlanta @ Alliance Francaise Atlanta</u> Contact: Enrollment Department, info@teachinghouse.com	Georgia	✓	* *	✓ ✓	✓ ✓	* *
<u>Teaching House Chicago</u> Contact: Enrollment Department, info@teachinghouse.com	Illinois	✓	* *	✓ ✓	✓ ✓	* *
<u>Teaching House Detroit @ University of Detroit Mercy</u> Contact: Enrollment Department, info@teachinghouse.com	Michigan	✓	* *	✓ ✓	✓ ✓	* *
<u>Teaching House Houston @ BEI</u> Contact: Enrollment Department, info@teachinghouse.com	Texas	✓ ✓	* *	✓ ✓	✓ ✓	* *
<u>Teaching House Los Angeles @ GEOS</u> Contact: Enrollment Department, info@teachinghouse.com	California	✓	1 x year 16 x year	✓	✓	* *
<u>Teaching House Miami</u> Contact: Enrollment Team, info@teachinghouse.com	Florida	✓	* 15 x year	✓ ✓	✓ ✓	* *
<u>Teaching House New York</u> Contact: Enrollment Department, info@teachinghouse.com	New York	✓	* 15 x year	✓ ✓	✓ ✓	* *
<u>Teaching House Philadelphia @ Lincoln Tech</u> Contact: Enrollment Department, info@teachinghouse.com	Pennsylvania	✓	* *	✓ ✓	✓ ✓	* *
<u>Teaching House Phoenix @ Business & Workforce Dev. Center</u> Contact: Enrollment Department, info@teachinghouse.com	Arizona	✓	* *	✓ ✓	✓ ✓	* *
<u>Teaching House Portland @ Pacific Northwestern College of Art</u> Contact: Enrollment Department, info@teachinghouse.com	Oregon	✓	* *	✓ ✓	✓ ✓	* *
<u>Teaching House Washington DC</u> Contact: Enrollment Department, info@teachinghouse.com	Washington DC	✓	* *	✓ ✓	✓ ✓	* *
<u>University of Hawaii English Language Program (HELP)</u> Contact: Joel Weaver, joelw@hawaii.edu	Hawaii		* *	✓	✓	*
<u>University of Texas at Austin CELTA Centre (UTCC)</u> Contact: Michael Smith, CELTA@austin.utexas.edu	Texas	✓	6 x year *	✓ ✓	✓ ✓	US\$2,595 *

*Contact institution for details

Want to teach English in the UK or abroad?



English is spoken by 1.75 billion people worldwide.

The need for teachers of English language in the UK and internationally has never been greater.

The Trinity Certificate in TESOL courses delivered by City College Peterborough are designed to provide you with an internationally recognised qualification to teach English both in the UK and abroad.

A short, intensive teacher training qualification, it will provide you with the basic skills and knowledge you need to teach ESOL (English to Speakers of Other Languages) to adults.

Here's why you should train with City College Peterborough:

- ✓ 100% pass rates
- ✓ Flexibility to study online or combined online and classroom
- ✓ Full and part-time courses to suit you
- ✓ Experienced and dedicated Level 7 specialist tutors to deliver your training

So, if you're over 21, speak and write English fluently, are educated to at least undergraduate degree level or equivalent and are able to commit the time and effort needed, what are you waiting for?

To find out more, visit:
www.citycollegepeterborough.ac.uk

☎ 01733 761361

✉ admin@citycollegepeterborough.ac.uk



 **City College
Peterborough**

Working together, learning together

Examining Trinity

A close look at a useful certificate

The Trinity College London Certificate in Teaching English to Speakers of Other Languages (CertTESOL) launched in 1980 and is one of two certificates offered by an English exam board that also provides a suite of English language exams for students.

The Trinity College London, a British exam board, was founded in 1877 to offer qualifications in music and now offers assessments in a variety of areas, including performance arts and languages.

Its English language exams are widely used and its CertTESOL is one of a small number of TESOL certificates offered by an official body (see box). It appears to be the only one listed on the Register of Recognised Qualifications for England.

The main difference between CELTA and Trinity, apart from the fact that Trinity has 130 course hours, is that it validates courses which meet its requirements. Its courses are particularly strong on the teaching of phonology and pronunciation, and also include some exposure to foreign language learning.

Although the CertTESOL focuses on teaching adults, it also offers a 100-hour Teaching Young Learners Extension Certificate and has just introduced a 100-hour Certificate for Practising Teachers, covering areas from academic English to CLIL (see page 32).

The main disadvantage is that the name Trinity, while well-known in Europe, Latin America and India, is less familiar to schools in East Asia, though all the government schemes we looked at accept it.

The word TESOL is not unique to Trinity College London. Below are some of the main official uses of the term.

- TESOL stands for Teaching English to Speakers of Other Languages. The term is used for many master's degrees and by Trinity College London for its Certificate, which is at level 5 on the recognised qualification for England (its diploma is at level 8). It also offers a level 7 certificate in Professional Training (see page 32).
- The Scottish qualification authority, SQA Scotland, offers a TESOL qualification for teachers of adult migrants.
- TESOL International is the name of the large US-based association of English language teachers founded in 1966. Its members include both US teachers, most of whom teach in US schools and colleges, and teachers from overseas. It runs a large international conference. TESOL has long offered professional development programmes and now has its own 140-hour TESOL core certificate.
- TESOL Asia is also an association and also runs conferences. It offers online teacher training.
- The Irish Department of Education has a state-recognised level 7 TESOL certificate.

Institutions offering Trinity London	Town	Online	How often	Full time	Part-time	Cost
Malta						
EF Education First, San Giljan Contact: Alexandra.bianco@ef.com	St Julian	*	*	*	*	*
New Zealand						
IPU New Zealand Tertiary Institute Contact: TESOL@ipu.ac.nz	Auckland	*	1 x year	*	*	NZ\$3,500
United Kingdom & Republic of Ireland						
Ardmore Teacher Training Contact: Colin Spicer, teachertraining@theardmoregroup.com	Maidenhead	✓	2 x year 1 x year	✓ *	*	£1,040 *
Ardmore Teacher Training Contact: Colin Spicer, teachertraining@theardmoregroup.com	Woking	✓	1 x year 1 x year	✓	✓	£1,040 *
Athena Teacher Training Contact: John Kay, info@athena-teacher-training.co.uk	Bournemouth	*	*	*	*	£1,399
Bishop Grosseteste University Contact: Dr Smaragda Kampouri, smaragda.kampouri@bishopg.ac.uk	Lincoln	*	*	*	*	*
Bradford College Contact: k.sawyer@bradfordcollege.ac.uk	Bradford		1 x year		✓	£990
*Contact institution for details						

Institutions offering Trinity London	Town	Online	How often	Full time	Part-time	Cost
United Kingdom & Republic of Ireland continued						
<u>City College Peterborough</u> Contact: slake@citycollegeterborough.ac.uk	Peterborough	*	*	*	*	*
<u>Colchester Institute</u> Contact: sally.chamberlain@colchester.ac.uk	Colchester		1 x year		✓	£1,500
<u>Coleg Menai</u> Contact: owen5s@gllm.ac.uk	Bangor	*	*	*	*	*
<u>Derby FE College</u> Contact: dominic.mccabe@derby-college.ac.uk	Derby	*	*	*	*	*
<u>East Berkshire College</u> Contact: sharon.mcilroy@eastberks.ac.uk	Slough		1 x year		✓	£1,075
<u>ELA – Edinburgh</u> Contact: Olga Hutchins, dos@elacademy.co.uk	Edinburgh	*	1 x year	✓	✓	*
<u>Enterkey Training</u> Contact: t.khan@enterkeytraining.com	Birmingham	*	*	*	*	*
<u>Greater Brighton Metropolitan College</u> Contact: Valentina Long, valentina.long@gbmc.ac.uk	Brighton	*	1 x year	*	*	£1,622
<u>Greater Brighton Metropolitan College</u> Contact: Valentina Long, valentina.long@gbmc.ac.uk	Worthing	*	1 x year	*	*	£345
<u>inlingua Cheltenham</u> Contact: service@inlingua-cheltenham.co.uk	Cheltenham	*	*	*	*	*
<u>INTO University of Exeter</u> Contact: j.lewin@exeter.ac.uk	Exeter		*			
<u>Keele University</u> Contact: Sarah Heaton, s.heaton@keele.ac.uk	Staffordshire	*	*	*	*	*
<u>Language Point Training</u> Contact: tom.garside@languagepointtraining.com	Hove	✓	6 x year 7 x year	✓	✓	£800 £995
<u>Language Tuition Nottingham</u> Contact: info@languagetuitionnottingham.co.uk	Nottingham		3 x year	✓	✓	£1,250
<u>Languages Training & Development, Witney</u> Contact: david@ltdoxford.com	Witney	*	*	*	*	*
<u>Lewis School of English</u> Contact: richendaa@lewis-school.co.uk	Southampton	✓	1 x year 1 x year	✓	✓	£1,125 £1,125
<u>Manchester Metropolitan University</u> Contact: t.leigh@mmu.ac.uk	Manchester	*	*	*	*	*
<u>North West Academy of English LTD</u> Contact: elt@northwestacademy.net	Derry, Northern Ireland	*	*	*	*	*
<u>Open Doors International Language School (ODILS)</u> Contact: Uschi Ensel, UEnsel@odils.com	Plymouth		*		✓	£1,500
<u>Oxford International, Brighton</u> Contact: tesolbrighton@oxfordinternational.com	Brighton		1 x year	*	*	£409
<u>Oxford International, Greenwich</u> Contact: Jane Stevenson, mlewis@OxfordInternational.com	Greenwich		6 x year	✓		£995
*Contact institution for details						

Institutions offering Trinity London	Town	Online	How often	Full time	Part-time	Cost
Preston College Contact: rwatkins@preston.ac.uk	Preston	*	*	*	*	*
Sidmouth International School Contact: efl@sidmouth-int.co.uk	Sidmouth	*	*	*	*	*
St Brelade's College Contact: info@stbreladescollege.co.uk	Jersey		1 x year	✓	✓	£1,195
Sussex Coast College Hastings Contact: OHaas@sussexcoast.ac.uk	East Sussex					
The Centre of English Language Teaching, University of York Contact: Victoria Jack, victoria.jack@york.ac.uk	York	*	*	*	*	£1,200
The Liverpool School Of English Ltd Contact: Anna Goodband, AnnaGoodband@lse.uk.net	Liverpool	*	5 x year	*	*	£1,100
The Manchester College Contact: Lisa O'Loughlin, sprimrose@themanchestercollege.ac.uk	Manchester	*	*	*	*	*
The Sheffield College Contact: Angela Foulkes - Chief Executive & Principal, Michelle.Brown-Vasilescu@sheffcol.ac.uk	Sheffield	*	*	*	*	*
The Tesol Centre Contact: tesol@shu.ac.uk	Sheffield	*	*	*	*	*
TLI School of English Edinburgh Contact: admin@tlieurope.com	Edinburgh	*	3 x year	*	*	£1,995
Train-to-TEFL, Manchester Contact: Suzannah Redmond, learnmore@train-to-tefl.com	Manchester		6 x year	✓	✓	£1,250
UCD English Language Academy Contact: Aoife Sheils, paul.kavanagh@ucd.ie	Dublin, Ireland	*	3 x year	*	*	*
University of Central Lancashire Contact: nhalenko@uclan.ac.uk	Preston	*	*	*	*	£1,500
University of Hull Contact: Mr Ian Hutchinson, I.Hutchinson@hull.ac.uk	Hull	*	*	*	*	*
University of Hull, Scarborough Campus Contact: Mr Ian Hutchinson, i.hutchinson@hull.ac.uk	Scarborough	*	*	*	*	*
University of Portsmouth Contact: Rebecca Hamlet, rebecca.hamlet@port.ac.uk	Portsmouth	*	*	*	*	£1,500
University of Sussex Centre for Language Studies Contact: Jennifer Book, j.b.book@sussex.ac.uk	Brighton		1 x year	✓	✓	£9,250
WE Bridge International Ltd Contact: Georgeta Bradatan, georgeta@we-bridge.co.uk	Cardiff	*	1 x year	*	*	£1,450
Wimbledon School of English Contact: info@wimbledon-school.ac.uk	Wimbledon		1 x year		✓	£995

*Contact institution for details

Upskill with the CertPT

Trinity College London's head of TESOL qualifications, Ben Beaumont, explains why their CertPT is the next logical step

The thing I really like about our new Certificate for Practising Teachers (CertPT) is that it takes a step back from focusing solely on specific English language learning objectives and looks at the over-arching pedagogic 21st-century skills that teachers need. These include: the ability to evaluate resources, adapt and create resources, and reflect on resource use, all within a given context.

The CertPT course and qualification can be tailored to meet a specific cohort's needs by drawing on the expertise of the local training team to decide on course content and emphasis. For example, because of the CertPT's broader pedagogical objectives based on resource evaluation and development, a group of CLIL teachers can focus on CLIL resource design; if it's for teachers making the transition from CertTESOL/CELTA to diploma-level courses, it can focus on resource design for communicative teaching, and so on. It can also be used for those

working in a different sector, who want an ELT-focused training course. The course focus (eg, CLIL, CLT) is then indicated in a teacher's qualification transcript, confirming their area of achievement.

As long as a course stays true to the pedagogical objectives of the CertPT, a training provider is free to create a programme relevant to a group's needs. This includes their language needs: as the course can be assessed plurilingually with English, Spanish and Mandarin, teachers who speak these languages and have an English level below B2 can still be assessed, using the language most suitable for them to demonstrate their knowledge. This is possible because the focus is on teaching knowledge and skills, and not solely language teaching.

Centres can also choose the mode of delivery (eg, in person or online), so teachers can choose *how* to study, as well as *what* to study, thereby increasing opportunities to develop the knowledge and skills they want to.

And, as part of the course validation process, we use third-party experts to review course timetables and planned content, thereby ensuring that the courses and sessions meet our strict requirements for CertPT-validated course providers.

As well as being a CPD qualification that meets teachers' development needs according to their teaching context, at level 6 (between CertTESOL/CELTA and diploma), the CertPT enables teachers to demonstrate and be awarded for degree-level knowledge and skills, without having to undertake a full undergraduate degree.



Ben Beaumont is head of TESOL qualifications at Trinity College London and is particularly interested in sharing practice between educational sectors to develop teachers' contextualised professional practice.

TRINITY
COLLEGE LONDON

Introducing the CertPT: Certificate for Practising Teachers

Practical skills to transform teaching

Trinity's TESOL qualifications are designed to support English language teachers throughout their careers – from new practitioner to experienced professional.

The Trinity CertPT is an innovative new Level 6* qualification for practising teachers that offers:

- ▶ Trinity-certified professional development
- ▶ Development of context-specific pedagogical skills
- ▶ Face-to-face, online or blended study
- ▶ Bilingual training and assessment options

As CertPT assesses pedagogical skills rather than language ability, teachers have the option, depending on course provider arrangements, of submitting written assignments for assessment solely in English, or bilingually in English and Spanish or English and Mandarin Chinese**.



Flexible course delivery

Face-to-face, online or blended courses, depending on course provider



100 hours

30 hours' guided learning (minimum) plus 70 hours' self-study



Four assessment tasks

Evaluate, adapt, create and reflect on the use of resources, informed by professional knowledge and insight



Bilingual options

Training and assessment options solely in English, or in English and Spanish or English and Mandarin Chinese**

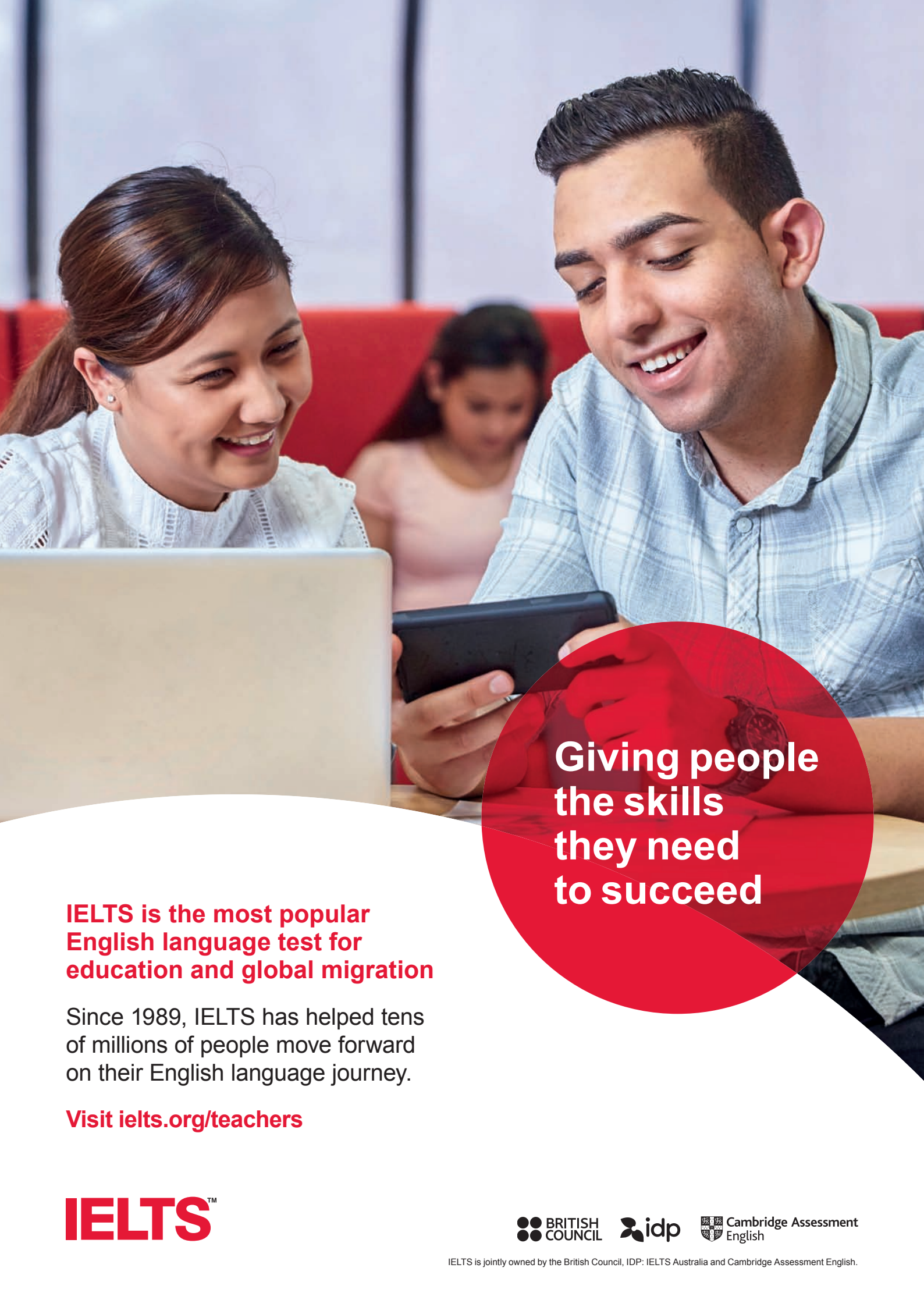
Find a course at trinitycollege.com/TESOL

[f/TrinityCollegeLondon](https://www.facebook.com/TrinityCollegeLondon)

[y/TrinityVideoChannel](https://www.youtube.com/TrinityVideoChannel)

* Level 6 on Ofqual's Register of Regulated Qualifications (RQF)
** Additional languages of assessment may be available in the future





**Giving people
the skills
they need
to succeed**

**IELTS is the most popular
English language test for
education and global migration**

Since 1989, IELTS has helped tens of millions of people move forward on their English language journey.

Visit ielts.org/teachers

IELTS™

 **BRITISH
COUNCIL**

 **idp**

 **Cambridge Assessment
English**

IELTS is jointly owned by the British Council, IDP, IELTS Australia and Cambridge Assessment English.

Which master's degree is right for you?

Melanie Butler unlocks the secret to understanding the MA system in the UK and Ireland

In the UK and Ireland, master's degrees are not normally teacher-training qualifications. They are post-experience courses which teachers enrol on in order to further their careers.

Masters for English language teachers cater for a wide range of students, from experienced native speaker teachers aiming for a teaching job at university level, to non-native speakers enrolled because it's a teaching qualification back home or they're recent graduates with degrees in language and linguistics who may not want to teach at all but aim to go into research.

In the UK and Ireland, a full-time master's will take a year on average. Though, especially on a research-focused degree, this may be a full calendar year from September to September, rather than an academic one. Basically, this means that you are expected to write your thesis over the summer and then graduate in the autumn.

In order to make the right choice it's important to understand the jargon surrounding master's courses in the UK and Ireland.



Study a master's in TESOL

Learn to teach English to speakers of other languages with this specialist masters course from the University of Bath.

A **TOP 10** UK University*



go.bath.ac.uk/tesol

"I learnt a lot, and turned out to be a very different person after the course. A more capable person in this industry."

Xing Feng,
MA TESOL Graduate 2019

*The Guardian University Guide 2021

Better at
Bath



THE UNIVERSITY
of EDINBURGH

Open your mind

Study a Masters in
language education
at a world-leading
university



New!

MSc Language & Intercultural Communication
MSc Language Education
MSc TESOL

Apply now for September 2021

edin.ac/educ-taught-degrees

Open to
the world



the MEd is likely to be more practical, while the other will be more focused on theory.

The actual name of the course tells you very little unless it's a specialist course, like the MA in English Medium Instruction at the University of Bath. Courses referring to EFL/ELT/TESOL or another name for English teaching tells you it only applies to English language teachers (and not, for example, to French language teachers). Degrees just in applied linguistics may cover a broader spectrum of students.

The balance of theory and practice depends more on the nature of the university and the department than on the content of the actual degree.

The name of the department can tell you a lot. Departments of education are more likely to be teaching-focused than departments of linguistics. Masters based in university language centres (marked with a * in our grid) are likely to be the most teaching-focused of all and the most likely to offer teaching practice.

In the UK we differentiate between research universities, for example, Sheffield or Manchester, and newer teaching universities, such as Edgehill. However, this is a little simplistic, as the newer universities may have research strength in a particular area. The University of East London, for example, ranked in the top 300 for educational research in the 2020 QS University rankings.

Research departments

For those students looking to focus on research, it's important to establish what field of research the department offering the course concentrates on: education, linguistics or English language (which tends to cover areas like corpus linguistics and philology). Also find out the department's reputation in that field.

To help you do that, in our list on the following pages we've put all the globally ranked departments in those three fields according to the QS World University rankings by subject for 2020. Edinburgh University, for example, has education and language sciences departments, which both offer relevant courses and rank in the QS top 50 in their subjects.

Teaching excellence

For universities in England and Wales, the UK government awards scores from bronze to gold for teaching across all subjects and at all levels on its Teaching Excellence Framework (TEF). This can give you some idea of the quality of teaching and also how much emphasis they are likely to give to teaching on their master's.

We've marked these scores under the column marked TEF.

It's important to remember, though, that the TEF is only compulsory for universities in England and Wales. Universities in Scotland and Northern Ireland can choose to enter, but seldom do and the Republic of Ireland is a separate country, so not part of the UK system.

English language teaching

How do you know if a university is good at English language teaching? The way we measure that is to check the results of the language centres who are inspected by the British Council. It's worth noting that BC inspection does not cover the Republic of Ireland.

If you look under the column headed BC on the chart, you will see the universities which choose to be inspected. Those whose inspection results are in the top 25% in the country, for example, are marked COE because they are an *EL Gazette* Centre of Excellence.

What's in a name?

There are four different names for master's degrees: Master of Arts (MA), Master of Science (MSc), Master of Education (MEd) and Master of Philosophy (MPhil), but they are not four different degrees. The MPhil is significantly different because it's a research degree with some taught elements, while the others are all taught degrees with some research.

In the UK, an MA or an MSc is basically the same degree. The use of MSc may signal that it's in a department of science or social science, but it's up to the university to choose. In Scotland, however, where some first degrees are awarded as MAs, the second degree is usually an MSc.

The University of St Andrews, for example, is one of the four ancient Scottish universities which are entitled to award a Master's of Arts to humanities students who have completed a four-year undergraduate degree. All its master's degrees in TESOL are MScs. Similarly Oxford and Cambridge award master's to their undergraduates – the Oxford course in our master's listings is an MSc, while the Cambridge course, which is a research degree, is an MPhil.

An MEd can only be awarded by a department of education, but it's not a teaching qualification, and is usually similar in content and level to an MA or MSc. When a university offers both an MEd and an MA,



MA Teaching English to Speakers of Other Languages (TESOL)

1 year full-time, 2 years part-time

Available in September 2021



For More information
visit our website:

ehu.ac.uk/tesol

MASTER'S LISTINGS

Institution and Department	Course Name	QS Global by subject	TEF	BC
UNITED KINGDOM				
Aberdeen, University of Language, Literature and Music	MSc TESOL MA Language and Linguistics MA English and Language and Linguistics	Top 250 English		
Anglia Ruskin University English and Media	OL MA Applied Linguistics and TESOL		Silver	Yes
Aston University Languages and Social Science	OL MA TESOL OL MA TESOL and Translation Studies		Gold	
Bangor University Languages, Literature and Linguistics	MA Applied Linguistics for TEFL MA Linguistics	Top 300 Linguistics	Gold	
Bath, University of Education	MA TESOL MA English as a Medium of Instruction	Top 100 Education	Gold	
Bath Spa University Education	MA TESOL		Silver	
Bedfordshire, University of Education	MA TESOL		Silver	Yes
English Language	MA Applied Linguistics			
Birkbeck University English Language and Linguistics	MA TESOL, MSc TESOL Education MA Applied Linguistics and TESOL MA English Language and Applied Linguistics	Top 300 Linguistics	Silver	
Birmingham City University English	MA English Linguistics		Silver	
Birmingham, University of Education	OL MA TESOL	Top 50 Education	Gold	Yes
English Language and Linguistics	OL MA TESOL MA Applied Linguistics MA Applied Linguistics with TESOL	Top 50 English		
Bishops Grosseteste University Education	MA Education with TESOL		Gold	
Brighton, University of Literature, Linguistics and Languages	MA TESOL with ICT MA TESOL		Silver	Yes/CoE
Bristol, University of Education	MSc TESOL	Top 50 Education	Silver	
Cambridge, University of Medieval and Modern Languages and Linguistics	MPhil Theoretical and Applied Linguistics	Top 10 Linguistics	Gold	
Cardiff University English, Communication and Philosophy	MA Applied Linguistics MA Language and Linguistics	Top 100 English	Silver	
Cardiff Metropolitan University Education	MA TESOL		Silver	

Institution and Department	Course Name	QS Global by subject	TEF	BC
Canterbury Christ Church University Language Studies and Applied Linguistics	MA TESOL MPhil Applied Linguistics		Silver	Yes
UCLAN: Central Lancashire, University of Languages	OL MA TESOL MA TESOL and Applied Linguistics		Silver	Yes
Coventry University Humanities	MA ELT and Applied Linguistics		Gold	
De Montford University Centre for English Language Learning*	MA ELT		Gold	Yes
Durham University English Language Centre*	MA Applied Linguistics for TESOL MA TESOL	Top 250 Linguistics	Gold	
UEA: University of East Anglia Education and Lifelong Learning	MA TESOL MA Second Language Education	Top 300 Education	Gold	
East London, University of Education	OL MA Applied Linguistics		Bronze	
Edinburgh, University of Philosophy, Psychology and Language Sciences	MSc Phonetics MSc Applied Linguistics	Top 10 Linguistics	N/A	
Education	MSc TESOL MSc Language Teaching MSc Language and Intercultural Communication	Top 50 Education		
Edge Hill University Education	MA TESOL		Gold	Yes/CoE
Essex, University of Language and Linguistics	MA TESOL MA Applied Linguistics	Top 150 Linguistics	Gold	
Exeter, University of Education	MEd TESOL	Top 150 Education	Gold	
Glasgow, University of Education*	MEd English Language and Linguistics; MSc Applied Linguistics MEd TESOL; MSc TESOL	Top 50 Education	N/A	
Greenwich, University of Literature, Language and Theatre*	MA Applied Linguistics MA TESOL		Silver	Yes/CoE
Hertfordshire, University of Humanities	MA TESOL		Gold	
Huddersfield, University of English, Linguistics and History	MA English Language and Applied Linguistics, MA TESOL		Gold	
Kings College London Education and Professional Studies	MA Applied Linguistics and ELT MA TESOL (CELTA)	Top 50 Education	Silver	CoE
Lancaster University Linguistics and English Language	OL MA Applied Linguistics and TESOL OL MA TESOL OL MA Language Testing MA Language and Linguistics	Top 50 Linguistics	Gold	CoE

MASTER'S LISTINGS

Institution and Department	Course Name	QS Global by subject	TEF	BC
Leeds Beckett University English Language Teaching*	OL MA ELT (TESOL)		Silver	Yes/CoE
Leeds, University of Languages, Cultures and Societies	MA Linguistics and ELT	Top 150 Linguistics	Gold	Yes/CoE
Education	MA TESOL MA TESOL and ICT	Top 50 Education		
Leicester, University of Education	OL MA TESOL (ELT) MA Applied Linguistics and TESOL MA English Language and Linguistics	Top 200 Education	Silver	Yes/CoE
Liverpool, University of English	MA TESOL MA Applied Linguistics	Top 150 English	Silver	Yes/CoE
London Metropolitan University Education and English Language Teaching	MA Teaching Languages OL MA Applied Linguistics and TESOL		Bronze	
Manchester, University of Education	MA TESOL MA TESOL with ICT	Top 50 Education	Silver	Yes/CoE
Manchester Metropolitan University Languages, Information, Communication*	OL MA TESOL and Applied Linguistics	Top 200 Education	Silver	Yes/CoE

 **University of St Andrews**

Start or enhance your TESOL career

MSc and PGCert TESOL programmes

Online or on-campus September or January start dates

Top 2 UK university
Guardian rankings 2021

Choose a specialism

- English for Academic Purposes
- Assessment and Evaluation
- Technology for Teaching
- Teaching Young Learners
- English Medium Instruction

For more information, visit: <https://www.st-andrews.ac.uk/subjects/tesol>

The University of St Andrews is a charity registered in Scotland, No: SC013532

Institution and Department	Course Name	QS Global by subject	TEF	BC
Newcastle University Education, Communication and Language Science	MA Applied Linguistics and TESOL	Top 150 Education	Gold	
NILE: Norwich Institute for Language Education*	OL MA Professional Development for Language Educators	N/A	N/A	Yes/CoE
Northumbria University Humanities	MA Applied Linguistics for TESOL		Silver	Yes/CoE
Nottingham, University of Education	MA TESOL OL MA TEAP	Top 100 Education	Gold	Yes/CoE
English	OL MA Applied Linguistics and TESOL	Top 100 English		
Nottingham Trent University Arts and Humanities*	MA ELT MA TESOL		Gold	Yes/CoE
Open University Wellbeing, Education and Language Studies	OL MA/MEd Education with Applied Linguistics	Top 100 Education Top 150 Linguistics	N/A	
Oxford, University of Education	MSc Applied Linguistics and SLA OL MSc Applied Linguistics for Language Teaching	Top 10 Education	Gold	
Oxford Brookes University Education	OL MA Education and TESOL	Top 250 Education	Silver	
Portsmouth, University of Education, Languages and Applied Linguistics	OL MA Education (TESOL) OL MA Applied Linguistics and TESOL		Gold	
Business, Management and Marketing	MA TESOL Leadership			
Queen Mary University of London Language, Linguistics and Film*	PGCert Applied Linguistics for ELT MA English Language Teaching MA Language Teaching	Top 100 Linguistics	Silver	Yes/CoE
Queens University Belfast Education	MSc TESOL	Top 250 Education	N/A	Yes/CoE
Reading, University of Education	MA ELT	Top 250 Education	Silver	
English Language and Applied Linguistics	MA TESOL MA Applied Linguistics	Top 150 Linguistics		
Roehampton, University of Media, Culture and Language	MA TESOL		Silver	

KEY

BC British Council Rankings	TEFL Teaching English as a Foreign Language
CELTA Certificate in English Language Teaching to Adults	TESOL Teaching English to Speakers of Other Languages * Programme is taught in the language centre or jointly with language centre.
CoE <i>EL Gazette</i> Centre of Excellence	MA Master of Arts
OL Online (Distance) Learning	MPhil Master of Philosophy (research-based Masters)
ELT English Language Teaching	MSc Master of Science
QS QS World University Rankings	PGCert Postgraduate certificate
SLA Second language acquisition	
TEF Teaching Excellence and Student Outcomes Framework rating	

MASTER'S LISTINGS

Institution and Department	Course Name	QS Global by subject	TEF	BC
St Andrews University International Education Institute	<ul style="list-style-type: none"> OL MA TESOL OL MSc TESOL OL MSc TESOL / Assessment & Evaluation OL MSc TESOL / EAP OL MSc TESOL / EMI OL MSc TESOL / Young Learners OL MSc TESOL / Technology for Teaching 			
Sheffield, University of English	MA Applied Linguistics and TESOL	Top 100 English	Silver	Yes/CoE
Sheffield Hallam University Education*	<ul style="list-style-type: none"> MA TESOL OL PGCert TEAP (Teaching English for Academic Purposes) 	Top 300 Education	Silver	Yes/CoE
Southampton, University of Modern Languages and Linguistics	<ul style="list-style-type: none"> MA Applied Linguistics for Language Teaching MA Applied Linguistics Research Methodology MA ELT/TESOL Studies OL MA TESOL MA Global Englishes 	Top 250 Linguistics	Silver	
Stirling, University of Education	<ul style="list-style-type: none"> MSc English Language and Linguistics MSc Educational Studies and TESOL MSc TESOL MSc Translation Studies with TESOL MSc Management and ELT OL MA Applied Linguistics for TESOL 	Top 200 Education	N/A	

Develop your career in English Language Teaching and Applied Linguistics

APPLIED LINGUISTICS (TESOL) MA

- Gain practical classroom experience and TEFL Q status
- Develop an insight into applied linguistics and language teaching
- Explore your research interests in our world-leading centre

INTERNATIONAL EDUCATION (ENGLISH LANGUAGE TEACHING) MA*

- Gain theoretical and practical insight into current issues in education that inform English Language Teaching

For more information, email claudia.saraceni@beds.ac.uk

www.beds.ac.uk
*subject to approval



University of
Bedfordshire

Institution and Department	Course Name	QS Global by subject	TEF	BC
Strathclyde, University of Humanities	MSc TESOL and Intercultural Communications		N/A	
Sunderland, University of Teacher Training and Education	MA TESOL		Silver	
Surrey, University of Literature and Language	MA TESOL		Gold	
Sussex, University of Centre for Language Studies*	MA ELT		Silver	
English	MA Applied Linguistics	Top 100 English		
Swansea University Arts and Humanities	MA TESOL MPhil Applied Linguistics	Top 250 English	Gold	Yes/CoE
University College London Institute of Education	MA TESOL MA English Education MA Applied Linguistics	Top 10 Education	Silver	
Warwick, University of Applied Linguistics	MA TESOL	Top 150 Linguistics	Silver	
York, University of Education	OL MA Applied Linguistics for ELT MA Applied Linguistics for Language Teaching OL MA TESOL	Top 150 Education	Gold	
York St John University	MA Applied Linguistics and TESOL		Bronze	Yes

Institution and Department	Course Name	QS Global by subject	TEF	BC
REPUBLIC OF IRELAND				
Mary Immaculate College (Limerick) Arts	MA Applied Linguistics		N/A	
Trinity College Dublin Language and Communication Studies	MPhil ELT MPhil Applied Linguistics	Top 200 Linguistics	N/A	
Ulster University Arts, Humanities and Social Sciences	MSc Linguistics and TESOL MA TESOL MSc English Language and Linguistics		N/A	
University College Cork Languages, Literatures and Cultures	MA Applied Linguistics		N/A	
University College Dublin Languages, Cultures and Linguistics	MA Applied Linguistics	Top 300 Linguistics	N/A	

KEY

BC British Council Rankings
CELTA Certificate in English Language Teaching to Adults
CoE EL Gazette Centre of Excellence
OL Online (Distance) Learning
ELT English Language Teaching
QS QS World University Rankings
SLA Second language acquisition

TEF Teaching Excellence and Student Outcomes Framework rating
TEFL Teaching English as a Foreign Language
TESOL Teaching English to Speakers of Other Languages
 * Programme is taught in the language centre or jointly with language centre.
MA Master of Arts
MPhil Master of Philosophy (research-based Masters)
MSc Master of Science
PGCert Postgraduate certificate